

AiSi 304 stainless steel circulation pedestal tables

- Structure of welded stainless steel pedestal tables. Pedestal tables open on all sides - Resin top plate optional.
- Standard fitted with 4 pairs of runners (single pedestal table) or 8 pairs of straight and removable runners (double pedestal table) in stainless steel with composite stops. 1 stainless steel handlebar included.
- Trolleys compatible with 600 x 400 drawers and containers with lip as well as the interior parts in the Eolis range®.
- 4 Ø 125 mm polyamide swivel castors with guard, stainless steel ball bearing. Bumpers and brake wheels available as an option

→ Single - 9 modules - Depth 400 mm



Version 1002.15 equipped

Characteristics

MAXIMUM LOADS: 100 kg

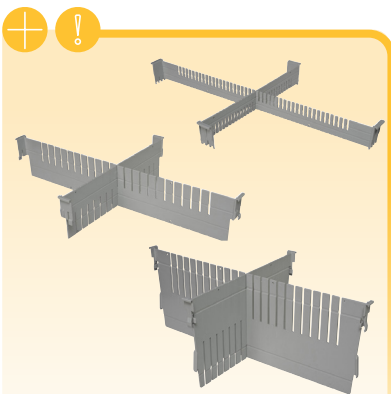


→ **STAINLESS STEEL MOBILE PEDESTALS FOR INTERIOR USE**

MODEL	DIM. L X W X H	REF.
Single (9 modules) - Width 600	697 x 471.5 x 998 mm	1002.15
Double (2 x 9 modules) - Width 600	1335 x 471.5 x 998 mm	1002.16
Single (9 modules) - Width 400	497 x 671.5 x 998 mm	1002.17
Double (2 x 9 modules) - Width 400	935 x 671.5 x 998 mm	1002.18

→ **UPPER PLATE IN COMPACT ANTIBACTERIAL RESIN FOR CIRCULATORY PEDESTAL TABLES**

MODEL	SINGLE	DOUBLE
Width 600	1102.89	1103.28
Width 400	1102.89	1103.29

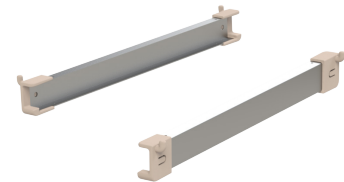


See all the **modular accessories** available for circulation pedestal tables.



→ **Openwork containers with lip 600 x 400**

MATERIAL	MODULE	REF.
ABS grey	1 module	1102.30
	2 modules	1102.31
	3 modules	1102.32



→ **Additional pairs of runners**

MODEL	REF.
Depth 400	1200.26
Depth 600	1200.27

On page 113

Remember to include 2 stops - Ref. 1102.39.