

USER MANUAL



IV STAND HEAVY-DUTY MODELS

For models:

REF

080-3900, 080-3910, 080-3920, 080-3930

NOTE!

The operator must read the user manual carefully **BEFORE** the product is used, to avoid unnecessary risks to the patient and operator.

TABLE OF CONTENTS

Foreword

Warranty

Important information

1. Functional description

1.1 General description

2. Operation

2.1 Assembly

2.2 Max load

3. Maintenance & Cleaning

3.1 Routine examinations

3.2 Cleaning

4. Technical specification

4.1 Dimensions

4.2 Labels

5. EU-Declaration of Conformity

6. Contact details

FOREWORD

Welcome as the owner of a product manufactured by Sjöbloms Sjukvårdsutrustning AB. We hope that you will be pleased and satisfied with our quality product.

If a problem should arise with this or any of our products, you are always welcome to contact us, and our service department will assist you with the expertise needed to solve the problem.

The user manual contains all the information needed to use, maintain and service the product. The document is continuously updated as the products are modified. Therefore we reserve against possible changes in the user manual.

WARRANTY

Sjöbloms provides a two-year warranty for material, design and manufacturing defects, provided the products are not subjected to tampering or excessive wear. For the guarantee to apply, the product must have been used in accordance with the user manual, and the maintenance performed as specified.

IMPORTANT INFORMATION

This product is intended for professional medical use. The user manual should be read carefully before using the product, to avoid unnecessary risks for the patient and operator.

The user manual contains warnings where there is a risk of personal injury, which should be noted. Improper handling can be fatal.

A warning triangle is shown where particularly important information can be found.



Warning triangle

1. FUNCTIONAL DESCRIPTION

This product is meant for professional use in health care, for examination of the patient.

It is designed to be a functional and user-friendly tool for the operator and patient.

General description

IV stand heavy-duty model, all-welded steel tubes, powder-coated steel foot, 75 mm castors, 2 with brake.

Available with or without handle, the stand has 4 hooks and a 5-legged foot. The handle is removable.

2. OPERATION

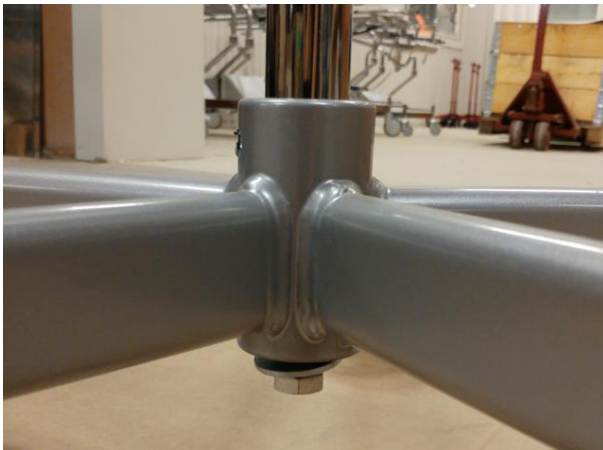
2.1 Assembly

If the stand is delivered with the hooks non-mounted, un-screw the screw as shown. Remove the hooks from under the foot where it is placed during transportation. Mount the hooks on the tube, tighten well. Handle and pump holders (both optional) is mounted from below before the foot is mounted.

The bolt is mounted at arrival. First un-screw this.



Place the tube onto the foot. Screw on the bolt from beneath.



Tighten the Allen screw.



Tighten handles.

2.2 Max load



Max load:

Pumps: Max 25 kg, evenly distributed.

Bags: The top and its 4 hooks may be loaded with max 10 kg evenly distributed. Max 4 kg on a single hook.



3. MAINTENANCE AND CLEANING

3.1 Routine controls

Routine controls is recommended every 6 months, lubricate if needed.



Important!

Failure to perform the following routine can cause the patient and/or operator to be exposed to unnecessary risks and the couch may have a reduced life expectancy. Please check all functions and parts on a regular basis.

Check the following:

- Any unusual sounds.
- Castors and castor locking mechanism.

3.2 Cleaning

Disinfection

If the product needs to be disinfected, use a diluted alcohol solution. Too strong an alcohol solution can have a drying effect and the imitation leather may deteriorate and crack.

Chlorine

Chlorine-base solutions are not recommended as a general rule, since it effects products and environment negatively, differently depending on concentration. If chlorine-based solutions are used, always wipe afterwards with damp cloth.

4. TECHNICAL SPECIFICATIONS

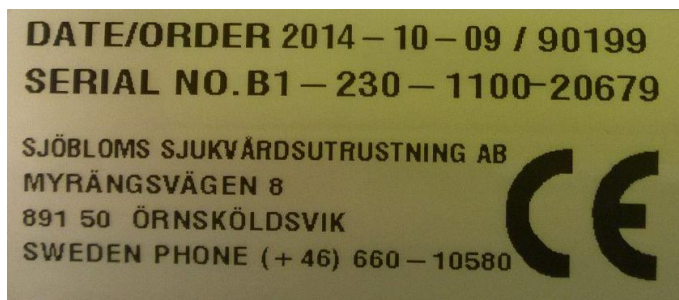
4.1 Dimensions

Minimal height: 145 cm

Max height: 240 cm

Weight: Ca 15 kg

4.2 Labels



CE label contains date, order number, serial number and our contact info.

5. EU-DECLARATION OF CONFORMITY

EU-DECLARATION OF CONFORMITY

according to MDD 2007/42/EC including Appendix
and according to CE-marking Directive 93/68/EEC

Type of equipment: IV stands heavy duty

Manufacturer: Sjöbloms Medical Equipment AB

Models

Art no: 080-3930 Product registration number: 144263

Art no: 080-3920 Product registration number: 144264

Art no: 080-3910 Product registration number: 144265

Art no: 080-3900 Product registration number: 144266

Manufacturer

Sjöbloms Sjukvårdsutrustning AB

Myrängsvägen 8

S-891 50 ÖRNSKÖLDSVIK, SWEDEN

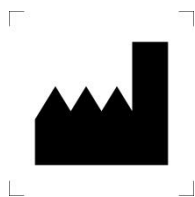
Sjöbloms Sjukvårdsutrustning AB ensures that the above products are in accordance with the EU Council MDD 93/42/EEC, as well as the Swedish legislation in force (1993:584) on medical devices and the regulations issued by Medical Products Agency (LVFS 2003:11).

Örnsköldsvik 2016-08-10



Karl-Gunnar Sjöblom

6. CONTACT INFORMATION



Sjöbloms sjukvårdsutrustning AB
Myrängsvägen 8
891 50 Örnsköldsvik
Sweden

Tel: +46 660 105 80

Fax: +46 660 180 00

E-mail: info@sjobloms.com

Web: www.sjobloms.com