

# TREATMENT CART WITH ROLLING SHUTTER

eolis 600x400

## TREATMENT CART WITH BASKETS



Ref. **1006.11 T01** EOLIS cart 600x400 exactly equipped as per picture:

- ABS, top tray with rims
- Extract. rolling shutter enabling disinfection + **key lock**
- 2 adj. rails left/right + adj. handle
- 4 wheels Ø 125 mm, 2 brakes
- 5 baskets (2 small, 2 medium, 1 big) with separations (options)
- Sticker TREATMENT
- 77W x 59D x 101H

## TREATMENT CART WITH BASKETS



Ref. **1006.11 T02** EOLIS cart 600x400 exactly equipped as per picture:

- ABS, top tray with rims
- Extract. rolling shutter enabling disinfection + **key lock**
- 2 adj. rails left/right + adj. handle
- 4 wheels Ø 125 mm, 2 brakes
- 4 baskets (4 medium) with separations (options)
- Sticker TREATMENT
- 77W x 59D x 101H

## MEDICATION CART FOR 40 PATIENTS + DRAWERS

New



Ref. **1006.01 M01** EOLIS cart 600x400 exactly equipped as per picture:

- ABS, top tray with rims
- Code lock + key
- 7 drawers (5 small, 1 medium, 1 big)
- 40 pill dispensers 1/8 (Ref. 1600.60) inside the 5 small drawers
- 2 adj. rails left/right + adj. handle
- 4 wheels Ø 125 mm, 2 brakes
- 77W x 59D x 101H

## TREATMENT / MEDICATION CART WITH PATIENT DRAWERS



Ref. **1006.11 T04** EOLIS cart 600x400 exactly equipped as per picture:

- ABS, top tray with rims
- Extract. rolling shutter enabling disinfection + **key lock**
- 2 adj. rails left/right + adj. handle
- 4 wheels Ø 125 mm, 2 brakes
- 15 drawers (12 big, 3 small) with separations
- Sticker TREATMENT
- 77W x 59D x 101H

ADD EXTRA ACCESSORIES pages 52 to 55



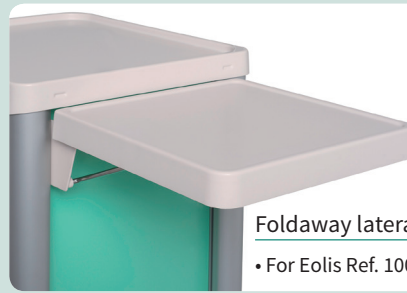
# EXTRA ACCESSORIES

eolis 600x400



Sliding lateral shelf antimicrobial  
Ref. **1600.43**

• only for trolley with drawer Ref. 1006.01



Foldaway lateral shelf - Ref. **1500.01**

• For Eolis Ref. 1006.01 and 1006.11



Telescopic front shelf  
Ref. **1600.27**

• For Eolis Ref. 1006.01 and cabinets



Telescopic front drawer  
lockable - Ref. **1600.28**

• For Eolis Ref. 1006.01 and cabinets



Telescopic front drawer  
lockable - Ref. **1600.29**

• For Eolis Ref. 1006.11 and cabinets



Telescopic epoxy steel shelf  
600x400 - Ref. **1101.99**

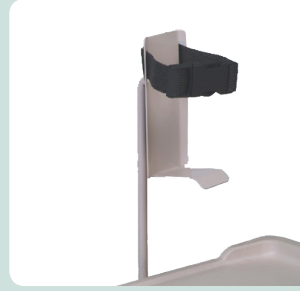
• For Eolis Ref. 1006.11 and cabinets



Guard rail - Ref. **1600.40**



Guard rail with bottle  
holder - Ref. **1600.41**



Liquid soap holder  
including clamp  
Ref. **1101.02**



3 cases bottle holder - Ref. **392.28**



Additional adjustable rail  
Ref. **1500.03**

• 330 L x 10 D x 35 H



2 curved hooks adjustable IV pole  
Ref. **1500.23**



Universal sharps container holder  
Ref. **1101.97**

• without sharp container



# EXTRA ACCESSORIES

**eoliz** 600x400



Gloves box holder in epoxy steel for rail  
Ref. **1100.74**



Epoxy steel lateral basket

- 300 L x 100 D x 100 mm ht  
Ref. **1101.90**
- 300 L x 160 D x 100 mm ht  
Ref. **1101.91**



Side basket in epoxy steel

- 400 L x 200 D x 150 mm ht  
Ref. **494.23**
- 400 L x 100 D x 100 mm ht  
Ref. **494.21**



Lateral box in epoxy steel for filing pockets - Ref. **1101.95**

- 328 L x 165 D x 245 mm ht



Lateral letter holder A4 size

- 1 case - Ref. **1500.29**
- 2 cases - Ref. **1500.28**
- 3 cases - Ref. **1500.27**



Sheet holder for rail - Ref. **1101.96**



Single waste bin with removable lid and support

- 10 liters - Ref. **1501.24**
- 15 liters - Ref. **1501.25**

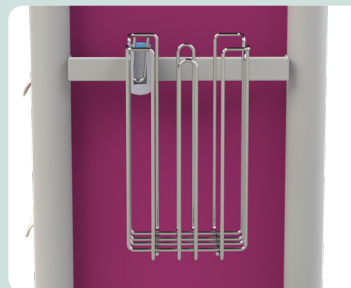


Double waste bins with removable lids and support

- 2 x 10 litres - Ref. **1501.26**
- 2 x 15 litres - Ref. **1501.28**



Refuse bin with lid operated by knee  
Ref. **1100.80**



Stainless steel refuse bag holder with clamps for standard rail

- 10 to 20 liters - Ref. **1501.22**
- 20 to 30 liters - Ref. **1501.23**



Stickers

- Ref. **1600.44** - Standard sticker: MEDICATION or TREATMENT or ANAESTHESIA
- Ref. **1600.45** - Customized stickers (max. 10 characters)



Additional cost for 4 antistatic wheels with 2 brakes - Ref. **1600.46**

Additional cost for directional wheel  
Ref. **1100.77**

# EXTRA ACCESSORIES

**eoliz** 600x400



Boxes holder - Ref. **1600.24**

Bridge - Ref. **1500.11**

Rail for bridge - Ref. **1600.22**

Liquid soap holder - Ref. **1500.21**



Shelf for bridge  
Ref. **1600.23**

Line of plastic boxes

- line of 6 boxes  
Ref. **1500.16**

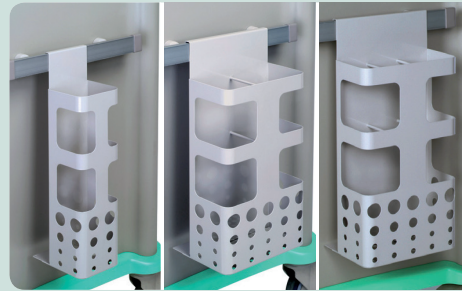
- line of 5 boxes  
Ref. **1500.17**

- line of 4 boxes  
Ref. **1500.18**



Boxes

- 1 litre - 103 L x 165 D x 83 mm HT - Ref. **890.65**
- 3,5 litres - 145 L x 240 D x 125 mm HT - Ref. **890.66**
- 10 litres - 207 L x 345 D x 165 mm HT - Ref. **890.67**



Catheter holder for rail

- 1 storage - Ref. **1101.94**
- 2 storages - Ref. **1101.92**
- 3 storages - Ref. **1101.93**



Swivel lateral defibrillator  
shelf - Ref. **1500.75**



Cardiac board with handles - Ref. **1600.25**

• 600 x 430 mm **CE**



Gaz bottle holder Ø 150 mm max.  
Ref. **1100.42**

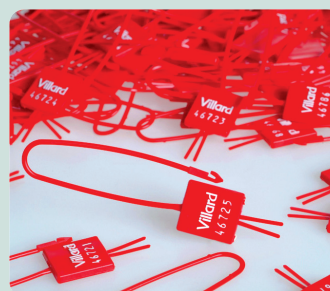


Holder for suction unit  
Ref. **1103.88**



Other plugs available

5 sockets + switch  
Ref. **1101.50**



Red seals (qty 100)  
Ref. **1100.47**



# EXTRA ACCESSORIES

eolis 600x400



Drawers for toxic drugs with lid and lock

- 1 level (63 mm H) - Ref. **1600.33**
- 2 levels (138 mm H) - Ref. **1600.34**
- 3 levels (216 mm H) - Ref. **1600.35**



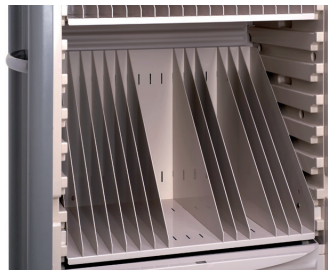
Files holder with compartments and removable partitions

- For medical files - 18 cases (3 L x 32 D x 36 H) - 5 levels - Ref. **1102.01**



Files holder on telescopic rail  
Ref. **1102.14**

- Capacity: 11 cases 40 mm
- 4 levels



- For X-ray files - 18 cases (3 L x 40 D x 48 H) - 7 levels - Ref. **1102.04**



Tube Ø 30 mm for computer holder  
Ref. **1500.80**

Vesa holder on short pivot - Ref. **1103.55**



Screen and keyboard antimicrobial holders on short pivot  
Ref. **1103.66**

- Height-adjustable and rotating



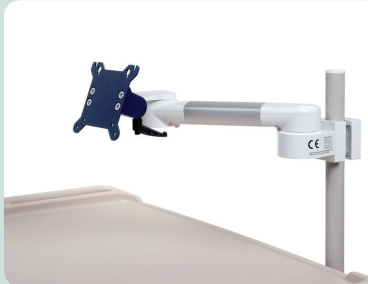
Arms with universal securized tray for laptop

- Fixed height - Ref. **1103.53**
- Variable height - Ref. **1103.54**



Fixed arm with universal securized tray for laptop  
Ref. **1500.81**

- Height-adjustable and rotating



Arms with universal screen holder

- Fixed height - Ref. **1103.56**
- Variable height - Ref. **1103.57**



Lithium universal battery (Life P04) 220 V AC - 250W / h  
Ref. **1104.52**



Compact central unit holder - Ref. **1600.26**



Lithium universal battery (Life P04) 220 V AC - 250W / h  
Ref. **1504.01**

- Battery integrated in the cart.
- Capacity: 250 W / h for Eolis cart.