

# TREATMENT CART

**eoliz COMPACT**

The Eolis® COMPACT Treatment Cart are available in ABS/Polypropylene resistant to disinfectants currently used in hospitals. Very light and manoeuvrable, the COMPACT size offers you a big storage volume.



COMPACT Treatment cart - 16 levels

Ref. **1005.01**

COMPACT Treatment cart - 14 levels


Ref. **1005.02**

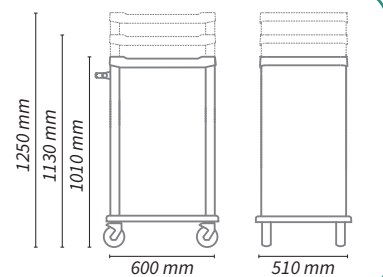
COMPACT Treatment cart - 12 levels

Ref. **1005.03**

## FEATURES

- ABS/PMMA composite upper tray with rims - Lateral and rear colour ABS panel
- Extractable rolling shutter enabling the cleaning and the disinfection
- Rolling shutter with key, code or badge lock as option (closing from bottom to top)
- Push handle and 2 height-adjustable normalized rails (1 on each side) included
- 4 composite wheels (Ø100mm) with integrated threadguards, 1 with brake
- All around grey ABS bumpers

 Empty weight: simple - from 28kg / double - from 45kg



## EXTRA ACCESSORIES

ACCESSORIES PAGES 62 - 63



Foldaway lateral shelf  
Ref. **1500.01**



White epoxy lateral basket  
Ref. **494.21**



Sharp holder  
Ref. **1101.97**



Single waste bin with removable lid and support (10L) - Ref. **1501.24**

 Colour choice

 Plum

 Green

 Saffron

 Coral

 Lilac

 Blue

 Red

# CUSTOMIZE YOUR TREATMENT CART



New

## 1 SELECT THE BASE



COMPACT Treatment cart  
16 levels - Ref. **1005.01**



COMPACT Treatment cart  
14 levels - Ref. **1005.02**



COMPACT Treatment cart  
12 levels - Ref. **1005.03**

## 2 ROLLING SHUTTER with lock



Rolling shutter with **key lock**  
Simple cart - Ref. **1501.01**



Rolling shutter with **code lock**  
Simple cart - Ref. **1501.03**



Rolling shutter with **badge lock**  
Simple cart - Ref. **1501.05**

## 3 DRAWERS



Drawer with handle - 1 level  
Ref. **1500.50**

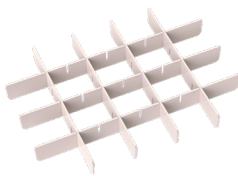


Drawer with handle - 2 levels  
Ref. **1500.51**

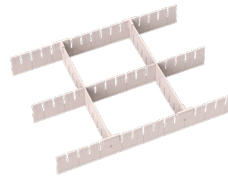


Drawer with handle - 3 levels  
Ref. **1500.52**

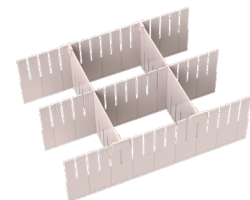
## 4 COMPARTMENTS for COMPACT drawers



20 compartments for drawer 1 level  
Ref. **1500.59**



6 compartments for drawer 2 levels  
Ref. **1500.63**  
8 compartments Ref. **1500.64**



6 compartments for drawer 3 levels  
Ref. **1500.68**  
8 compartments Ref. **1500.69**  
12 compartments Ref. **1500.61**

## 5 COLOURS



Plum



Green



Saffron



Coral



Lilac



Blue



Red

## 6 ADD EXTRA ACCESSORIES (see pages 62 - 63)

# EXTRA ACCESSORIES

**eoliz** COMPACT



Foldaway lateral shelf  
Ref. **1500.01**



Telescopic shelf for keyboard or file  
Ref. **1500.74**



Additional adjustable rail  
Ref. **1500.03**

- 330 L x 10 D x 35 H



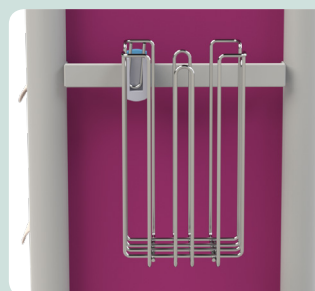
Universal sharps container holder  
Ref. **1101.97**

- without sharp container



Side basket in epoxy steel

- 400 L x 200 D x 150 mm ht  
Ref. **494.23**
- 400 L x 100 D x 100 mm ht  
Ref. **494.21**



Stainless steel refuse bag holder  
with clamps for standard rail

- 10 to 20 liters - Ref. **1501.22**
- 20 to 30 liters - Ref. **1501.23**



Single waste bin with removable lid  
and support

- 10 liters - Ref. **1501.24**
- 15 liters - Ref. **1501.25**



Double waste bins with removable  
lids and support

- 2 x 10 litres - Ref. **1501.26**
- 2 x 15 litres - Ref. **1501.28**



Refuse bin with lid operated by knee  
Ref: **1100.80**



Gloves box holder in epoxy steel for rail

- Simple - Ref. **1100.74**
- Triple - Ref. **1501.35**



2 curved hooks adjustable IV pole  
Ref. **1500.23**



3 cases bottle holder  
Ref. **392.28**

# EXTRA ACCESSORIES

**eoliz** COMPACT



Boxes holder - Ref. **1500.20**

Bridge - Ref. **1500.11**

Rail for bridge - Ref. **1500.12**

Liquid soap holder - Ref. **1500.21**

Gloves box holder - Ref. **1100.74**



Shelf for bridge  
Ref. **1500.14**

Line of plastic boxes

• line of 6 boxes  
Ref. **1500.16**

• line of 5 boxes  
Ref. **1500.17**

• line of 4 boxes  
Ref. **1500.18**



Epoxy steel lateral basket

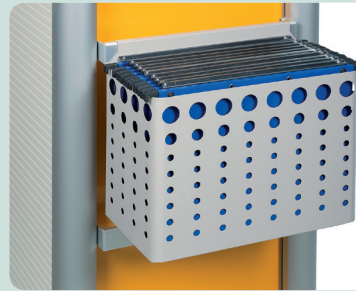
- 300 L x 100 D x 100 mm ht  
Ref: **1101.90**
- 300 L x 160 D x 100 mm ht  
Ref: **1101.91**



Bottle holder for normalized rail  
Ref. **1500.25**



Sheet holder for rail - Ref. **1101.96**



Lateral box in epoxy steel for filing pockets - Ref. **1101.95**

- 328 L x 165 D x 245 mm ht



Cup dispenser with clamp  
for normalized rail  
Ref. **1500.26**



Labels for pill dispensers  
Ref. **1103.36**

- Sheet with 28 adhesive labels



Stickers

- Ref: **1600.44** - Standard sticker: MEDICATION or TREATMENT or ANAESTHESIA
- Ref: **1600.45** - Customized stickers (max. 10 characters)



Additional cost for 4 antistatic wheels  
with 4 brakes - Ref: **1600.46**

Additional cost for directional wheel  
with brakes - Ref: **1100.77**