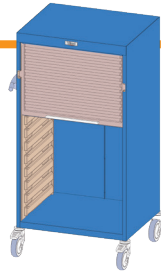


CREATE YOUR CABINET WITH

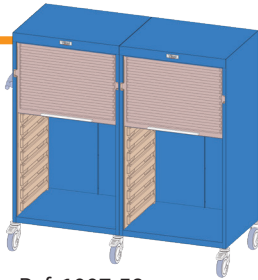
1

THE BASE

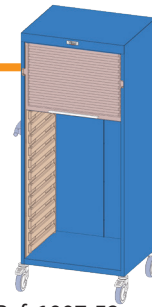
- Including the rolling shutter



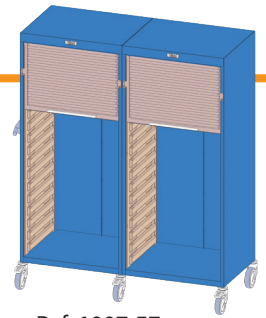
Ref. **1007.53**
69 x 57 x 131 HT cm
13 levels



Ref. **1007.58**
134 x 57 x 131 HT cm
2 x 13 levels



Ref. **1007.52**
69 x 57 x 162 HT cm
17 levels



Ref. **1007.57**
134 x 57 x 162 HT cm
2 x 17 levels

2

LOCKING



Key lock Ref. **1700.10**



Code lock Ref. **1700.11**

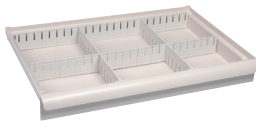


Code lock + key Ref. **1700.13**

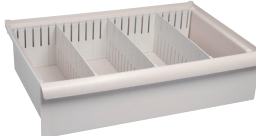
3

DRAWERS

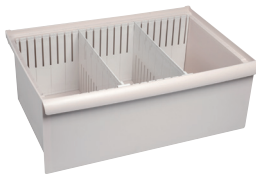
1 level - Ref. **1600.30**
600 x 400 x 63 mm ht



2 levels - Ref. **1600.31**
600 x 400 x 138 mm ht



3 levels - Ref. **1600.32**
600 x 400 x 216 mm ht



COMPARTMENTS

Compartments for small drawer 1 level

2 cpts. 1600.70	8 cpts. 1600.74
3 cpts. 1600.71	12 cpts. 1600.75
4 cpts. 1600.72	18 cpts. 1600.76
6 cpts. 1600.73	24 cpts. 1600.77

Compartments for medium drawer 2 levels

2 cpts. 1600.80	8 cpts. 1600.84
3 cpts. 1600.81	12 cpts. 1600.85
4 cpts. 1600.82	18 cpts. 1600.86
6 cpts. 1600.83	24 cpts. 1600.87

Compartments for big drawer 3 levels

2 cpts. 1600.90	8 cpts. 1600.94
3 cpts. 1600.91	12 cpts. 1600.95
4 cpts. 1600.92	18 cpts. 1600.96
6 cpts. 1600.93	24 cpts. 1600.97

SHELVES

Telescopic shelf - Ref. **1101.99**

- 1 level



Resin shelf - Ref. **1100.58**

- 1 level



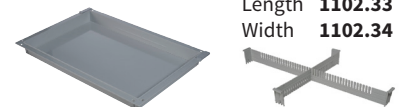
Polypropylene shelf - Ref. **1100.26**

- With rim - 1 level



BASKETS

1 level Ref. **1102.30** - 50 mm ht Separations



Length **1102.33**
Width **1102.34**

2 levels - Ref. **1102.31** - 100 mm ht



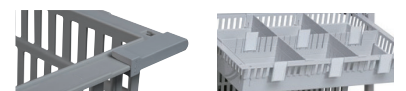
Length **1102.35**
Width **1102.36**

3 levels - Ref. **1102.32** - 200 mm ht



Length **1102.37**
Width **1102.38**

End stop **1102.39** Label holders **1102.69**



Drawers, baskets, patient bins and medication trays can be mixed

4

COLOURS

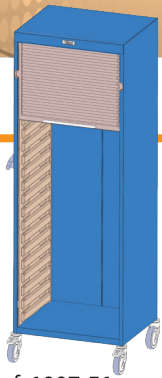


5

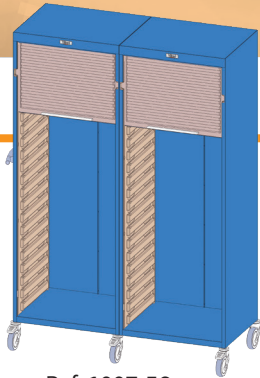
ADD EXTRA ACCESSORIES (see pages 30 - 31)

ROLLING SHUTTER

eoli 600x400



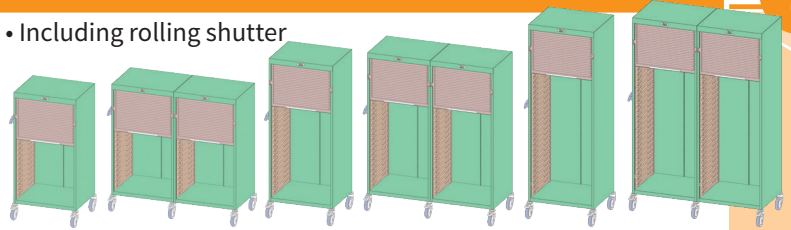
Ref. **1007.51**
69 x 57 x 192 HT cm
21 levels



Ref. **1007.56**
134 x 57 x 192 HT cm
2 x 21 levels

High capacity thin ladder cabinet **only** for pills dispenser 1103.37 and 1103.39 (including rolling shutters).

• Including rolling shutter



Ref. **1007.93** 18 levels **1007.98** 2 x 18 levels **1007.92** 24 levels **1007.97** 2 x 24 levels **1007.91** 30 levels **1007.96** 2 x 30 levels

1



Key lock Ref. **1700.10**



Code lock Ref. **1700.11**



Code lock + key Ref. **1700.13**

2

PATIENT BINS

1 level - Ref. **1100.26 OP3**

- 6 patient bins + 6 separations
- 90 x 385 x 60 mm ht each



2 levels - Ref. **1100.26 OP6**

- 6 patient bins + 6 separations
- 90 x 385 x 136 mm ht each



1 level - Ref. **1100.26 OP4**

- 4 patients bins + 4 separations
- 130 x 385 x 60 mm ht each



2 levels - Ref. **1100.26 OP7**

- 4 patients bins + 4 separations
- 130 x 385 x 136 mm ht each



1 level - Ref. **1100.26 OP5**

- 3 patients bins + 3 separations
- 178 x 385 x 60 mm ht each



2 levels - Ref. **1100.26 OP8**

- 3 patients bins + 3 separations
- 178 x 385 x 136 mm ht each



MEDICATION TRAYS

1 level - Ref. **1103.41**

- 7 pills dispenser
- with 3 separations
- 78 x 380 x 55 mm ht



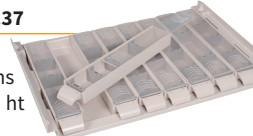
1 level - Ref. **1103.38**

- 8 pills dispenser
- with 3 separations
- 65 x 380 x 65 mm ht



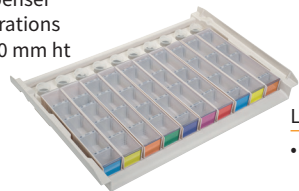
1 level - Ref. **1103.37**

- 8 pills dispenser
- with 3 separations
- 65 x 380 x 40 mm ht



1 level - Ref. **1103.39**

- 10 pills dispenser
- with 4 separations
- 28 x 280 x 40 mm ht



CASSETTE and LABELS

2 levels - Ref. **1600.36**

3 levels - Ref. **1600.37**



Handle - Ref. **1600.42**

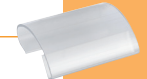
Labels - Ref. **1103.36**

- Colored sheets of 28 precut labels



Label Holder - Ref. **1103.35**

- Pack of 24 label holders



3

Drawers, baskets, patient bins and medication trays can be mixed

COLOURS

Colour choice

Plum

Green

Saffron

Coral

Lilac

Blue

Red

Grey

4

ADD EXTRA ACCESSORIES (see pages 30 - 31)

5