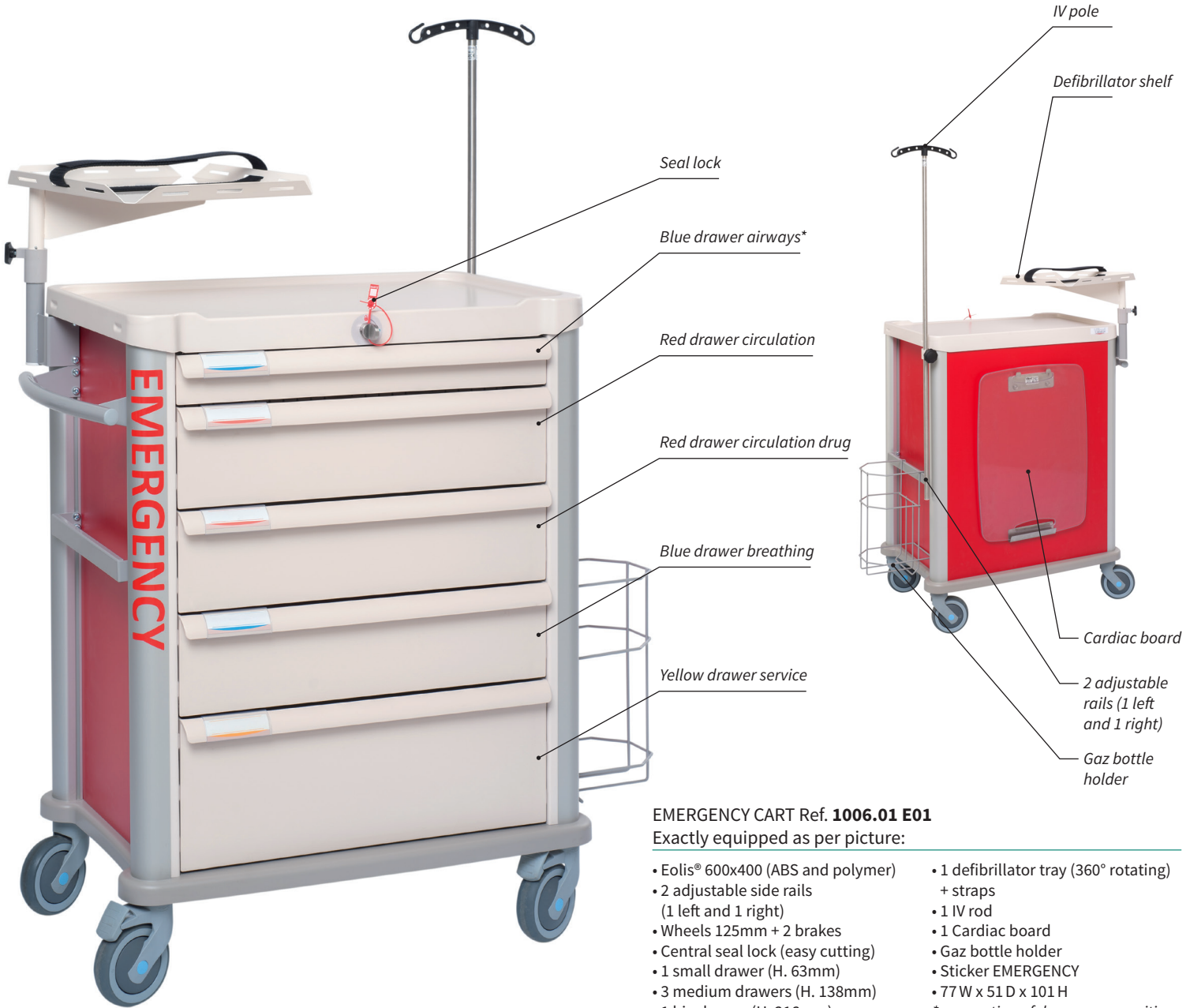


# EMERGENCY CART

**eolis® 600x400**

Strong and manoeuvrable for quick first emergency situations. Full of external and internal accessories such as cardiac board, central locking system with seals, defibrillator holder (rotating 360°), infusion rod, gaz bottler holder, separation kit drawers...



**EMERGENCY CART Ref. 1006.01 E01**  
Exactly equipped as per picture:

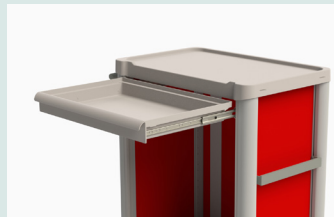
- Eolis® 600x400 (ABS and polymer)
- 2 adjustable side rails (1 left and 1 right)
- Wheels 125mm + 2 brakes
- Central seal lock (easy cutting)
- 1 small drawer (H. 63mm)
- 3 medium drawers (H. 138mm)
- 1 big drawer (H. 216mm)
- 1 defibrillator tray (360° rotating) + straps
- 1 IV rod
- 1 Cardiac board
- Gaz bottle holder
- Sticker EMERGENCY
- 77 W x 51 D x 101 H
- \* suggestion of drawer composition

**New**

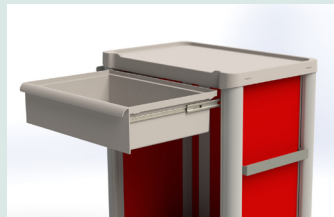
EQUIP YOUR EMERGENCY CART WITH TELESCOPIC DRAWERS:



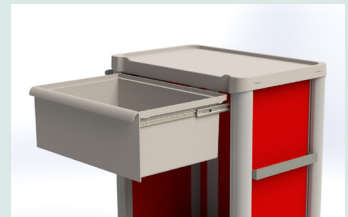
Conversion kit for telescopic drawer  
Eolis® Cart 600x400 Ref. **1600.50**



Drawer 1 level with telescopic slide  
Eolis® Cart 600x400 Ref. **1600.51**



Drawer 2 levels with telescopic slide  
Eolis® Cart 600x400 Ref. **1600.52**



Drawer 3 levels with telescopic slide  
Eolis® Cart 600x400 Ref. **1600.53**

**Colour choice**



Plum



Green



Saffron



Coral



Lilac



Blue



Red

# ANAESTHESIA CART PLASTER CART

eolis 600x400



New

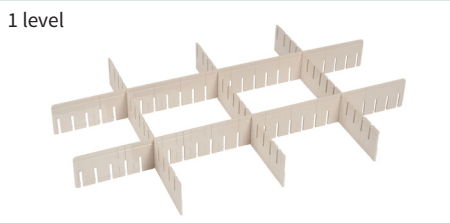
ANAESTHESIA CART Ref. **1006.01 A02** Exactly equipped as per picture:

- Eolis 600 x 400 (ABS and polymer)
- 3 adjustable side rails (2 left, 1 right)
- Central key lock
- 2 small drawers (ht 63 mm) + separation 12 cases.
- 1 medium drawer (ht 138 mm)
- 2 big drawers (ht 216 mm)
- 1 bridge + 1 medical rail
- Line of 4 boxes + basket
- 1 bin
- 1 sharp container holder
- Catheter holder
- Sticker ANAESTHESIA
- 77 W x 51 D x 101 H
- Wheels 125 mm + 2 brakes
- Height of the cart with bridge: 168 cm

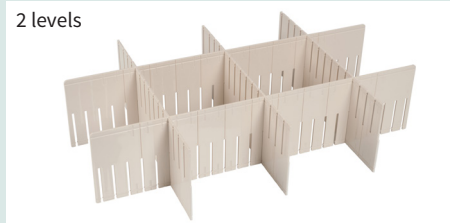
PLASTER CART Ref. **1006.01 P01** Exactly equipped as per picture:

- Eolis 600 x 400 (ABS and polymer)
- 2 adjustable side rails (1 left and 1 right)
- Wheels 125 mm + 2 brakes
- 1 small drawer (ht 63 mm)
- 3 medium drawers (ht 138 mm)
- 1 big drawer (ht 216 mm)
- 1 lateral bowl holder with bowl
- Jersey rolls holder in sand epoxy steel with altuglass in front.
- 5 compartments for jersey rolls of 3, 5, 7, 10 and 15 cm.
- 77 W x 51 D x 101 H (168H with holder)

## COMPARTMENTS



1 level	
2 cpts.	<b>1600.70</b>
3 cpts.	<b>1600.71</b>
4 cpts.	<b>1600.72</b>
6 cpts.	<b>1600.73</b>
8 cpts.	<b>1600.74</b>
12 cpts.	<b>1600.75</b>
18 cpts.	<b>1600.76</b>
24 cpts.	<b>1600.77</b>



2 levels	
2 cpts.	<b>1600.80</b>
3 cpts.	<b>1600.81</b>
4 cpts.	<b>1600.82</b>
6 cpts.	<b>1600.83</b>
8 cpts.	<b>1600.84</b>
12 cpts.	<b>1600.85</b>
18 cpts.	<b>1600.86</b>
24 cpts.	<b>1600.87</b>



3 levels	
2 cpts.	<b>1600.90</b>
3 cpts.	<b>1600.91</b>
4 cpts.	<b>1600.92</b>
6 cpts.	<b>1600.93</b>
8 cpts.	<b>1600.94</b>
12 cpts.	<b>1600.95</b>
18 cpts.	<b>1600.96</b>
24 cpts.	<b>1600.97</b>

SEE MORE ACCESSORIES PAGES 52 TO 55

# EXTRA ACCESSORIES

eolis 600x400



Sliding lateral shelf antimicrobial  
Ref. **1600.43**

• only for trolley with drawer Ref. 1006.01



Foldaway lateral shelf - Ref. **1500.01**

• For Eolis Ref. 1006.01 and 1006.11



Telescopic front shelf  
Ref. **1600.27**

• For Eolis Ref. 1006.01 and cabinets



Telescopic front drawer  
lockable - Ref. **1600.28**

• For Eolis Ref. 1006.01 and cabinets



Telescopic front drawer  
lockable - Ref. **1600.29**

• For Eolis Ref. 1006.11 and cabinets



Telescopic epoxy steel shelf  
600x400 - Ref. **1101.99**

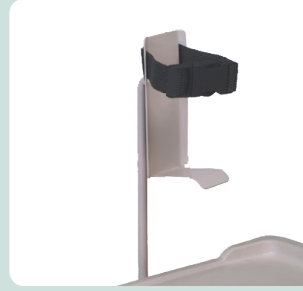
• For Eolis Ref. 1006.11 and cabinets



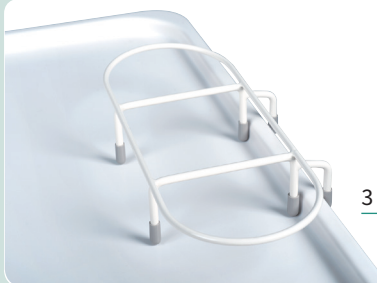
Guard rail - Ref. **1600.40**



Guard rail with bottle  
holder - Ref. **1600.41**



Liquid soap holder  
including clamp  
Ref. **1101.02**



3 cases bottle holder - Ref. **392.28**



Additional adjustable rail  
Ref. **1500.03**

• 330 L x 10 D x 35 H



2 curved hooks adjustable IV pole  
Ref. **1500.23**



Universal sharps container holder  
Ref. **1101.97**

• without sharp container

# EXTRA ACCESSORIES

eoliz 600x400



Gloves box holder in epoxy steel for rail  
Ref. **1100.74**



Epoxy steel lateral basket

- 300 L x 100 D x 100 mm ht  
Ref. **1101.90**
- 300 L x 160 D x 100 mm ht  
Ref. **1101.91**



Side basket in epoxy steel

- 400 L x 200 D x 150 mm ht  
Ref. **494.23**
- 400 L x 100 D x 100 mm ht  
Ref. **494.21**



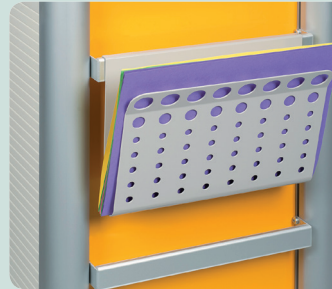
Lateral box in epoxy steel for filing pockets - Ref. **1101.95**

- 328 L x 165 D x 245 mm ht



Lateral letter holder A4 size

- 1 case - Ref. **1500.29**
- 2 cases - Ref. **1500.28**
- 3 cases - Ref. **1500.27**



Sheet holder for rail - Ref. **1101.96**



Single waste bin with removable lid and support

- 10 liters - Ref. **1501.24**
- 15 liters - Ref. **1501.25**

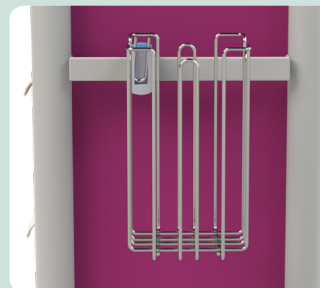


Double waste bins with removable lids and support

- 2 x 10 litres - Ref. **1501.26**
- 2 x 15 litres - Ref. **1501.28**



Refuse bin with lid operated by knee  
Ref. **1100.80**



Stainless steel refuse bag holder with clamps for standard rail

- 10 to 20 liters - Ref. **1501.22**
- 20 to 30 liters - Ref. **1501.23**

**ANAESTHESIA**  
**TREATMENT**

## Stickers

- Ref. **1600.44** - Standard sticker: MEDICATION or TREATMENT or ANAESTHESIA
- Ref. **1600.45** - Customized stickers (max. 10 characters)



Additional cost for 4 antistatic wheels with 2 brakes - Ref. **1600.46**

Additional cost for directional wheel  
Ref. **1100.77**

# EXTRA ACCESSORIES

**eoliz** 600x400



Boxes holder - Ref. **1600.24**

Bridge - Ref. **1500.11**

Rail for bridge - Ref. **1600.22**

Liquid soap holder - Ref. **1500.21**



Shelf for bridge  
Ref. **1600.23**

Line of plastic boxes

- line of 6 boxes  
Ref. **1500.16**

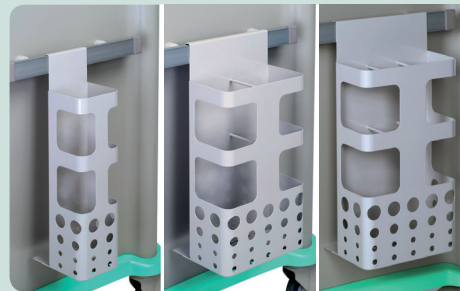
- line of 5 boxes  
Ref. **1500.17**

- line of 4 boxes  
Ref. **1500.18**



Boxes

- 1 litre - 103 L x 165 D x 83 mm HT - Ref. **890.65**
- 3,5 litres - 145 L x 240 D x 125 mm HT - Ref. **890.66**
- 10 litres - 207 L x 345 D x 165 mm HT - Ref. **890.67**



Catheter holder for rail

- 1 storage - Ref. **1101.94**
- 2 storages - Ref. **1101.92**
- 3 storages - Ref. **1101.93**



Swivel lateral defibrillator  
shelf - Ref. **1500.75**



Cardiac board with handles - Ref. **1600.25**

• 600 x 430 mm **CE**



Gaz bottle holder Ø 150 mm max.  
Ref. **1100.42**



Holder for suction unit  
Ref. **1103.88**



5 sockets + switch  
Ref. **1101.50**

Other plugs available



Red seals (qty 100)  
Ref. **1100.47**

# EXTRA ACCESSORIES

**eolis** 600x400



Drawers for toxic drugs with lid and lock

- 1 level (63 mm H) - Ref. **1600.33**
- 2 levels (138 mm H) - Ref. **1600.34**
- 3 levels (216 mm H) - Ref. **1600.35**



Files holder with compartments and removable partitions

- For medical files - 18 cases (3 L x 32 D x 36 H) - 5 levels - Ref. **1102.01**



Files holder on telescopic rail  
Ref. **1102.14**

- Capacity: 11 cases 40 mm
- 4 levels



- For X-ray files - 18 cases (3 L x 40 D x 48 H) - 7 levels - Ref. **1102.04**



Tube Ø 30 mm for computer holder  
Ref. **1500.80**

Vesa holder on short pivot - Ref. **1103.55**



Screen and keyboard antimicrobial holders on short pivot  
Ref. **1103.66**

- Height-adjustable and rotating



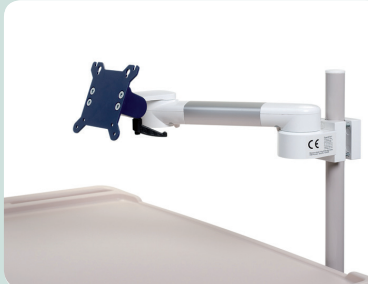
Arms with universal securized tray for laptop

- Fixed height - Ref. **1103.53**
- Variable height - Ref. **1103.54**



Fixed arm with universal securized tray for laptop  
Ref. **1500.81**

- Height-adjustable and rotating



Arms with universal screen holder

- Fixed height - Ref. **1103.56**
- Variable height - Ref. **1103.57**



Lithium universal battery (Life P04) 220 V AC - 250W / h  
Ref. **1104.52**



Compact central unit holder - Ref. **1600.26**



Lithium universal battery (Life P04) 220 V AC - 250W / h  
Ref. **1504.01**

- Battery integrated in the cart.
- Capacity: 250 W / h for Eolis cart.