

TREATMENT CART

eolix 600x400

The Eolis® 600 x 400 treatment carts are available in ABS/POLYPROPYLENE. The ISO standard size 600x400 offers you a great volume of storage. Resistant to disinfectants currently used in hospital environment.

TREATMENT CART FULLY EQUIPPED



Ref. **1006.01 T01** Exactly equipped as per picture:

- Cart (ABS + Polymer) with 5 drawers + 2 adjustable side rails (1 left, 1 right)
- Partitions in two drawers (small and medium)
- 1 bin + lateral basket + 3 bottles holder
- 1 sharp container holder
- Moulded worktop + central locking system with key
- Wheels 125 mm + 2 brakes, stainless steel balls bearing
- Sticker TREATMENT
- 77W x 51D x 101H cm

PROCEDURE CART GENERAL CART ISOLATION CART



Ref. **1006.01 G01** Exactly equipped as per picture:

- Cart ABS polymer with 5 drawers + 2 adjustable side rails (1 left, 1 right)
- Adjustable push handle
- Rim for optimal confort
- A large range of accessories is also available to adapt the configuration (procedure, isolation...)
- Wheels 125 mm + 2 brakes, stainless steel balls bearing
- Sticker TREATMENT
- 77W x 51D x 101H cm

New

PILL DISPENSER FOR DRAWERS 600x400



Equip your treatment or medication carts 600x400 with pill dispenser 1/8. Specific size designed to be integrated on drawer ISO 600x400 - 1 level (Ref. 1600.30).

Pill dispenser 1/8 only
for drawers 600x400
Ref. **1600.60**

Drawer not included



CREATE YOUR CART

eoliz 600x400

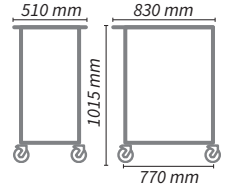
1 THE BASE



10 levels

Ref. **1006.01** - Capacity max. 10 levels

- Lateral and rear colour ABS panels.
- ABS upper beige tray with rims.
- Entirely modular conception offering big flexibility of layout.
- Integrated height-adjustable push handle.
- 2 height-adjustable normalized rails (1 on each side).
- 4 swivel Ø 125 mm polypropylene with threadguards wheels, 2 with brakes, stainless steel ball bearing.
- All around ABS bumper.
- Weight of an empty cart : 27.5 kg



2 LOCKING



Key lock

Ref. **1600.01**



Seal lock

Ref. **1600.02**



Code lock

Ref. **1600.03**



Code lock + key

Ref. **1600.05**

3 DRAWERS (max. 10 levels)



1 level

600 x 400 x 63 mm

Ref. **1600.30**



2 levels

600 x 400 x 138 mm

Ref. **1600.31**

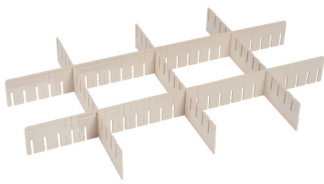


3 levels

600 x 400 x 216 mm

Ref. **1600.32**

4 COMPARTMENTS for 600x400 Drawers



COMPARTMENTS for small drawer 1 level

2 cpts.	1600.70	8 cpts.	1600.74
3 cpts.	1600.71	12 cpts.	1600.75
4 cpts.	1600.72	18 cpts.	1600.76
6 cpts.	1600.73	24 cpts.	1600.77



COMPARTMENTS for medium drawer 2 levels

2 cpts.	1600.80	8 cpts.	1600.84
3 cpts.	1600.81	12 cpts.	1600.85
4 cpts.	1600.82	18 cpts.	1600.86
6 cpts.	1600.83	24 cpts.	1600.87



COMPARTMENTS for big drawer 3 levels

Kit 2 cpts.	1600.90	8 cpts.	1600.94
Kit 3 cpts.	1600.91	12 cpts.	1600.95
Kit 4 cpts.	1600.92	18 cpts.	1600.96
Kit 6 cpts.	1600.93	24 cpts.	1600.97

5 COLOURS



Plum



Green



Saffron



Coral



Lilac



Blue



Red

6 ADD EXTRA ACCESSORIES (see pages 52 to 55)

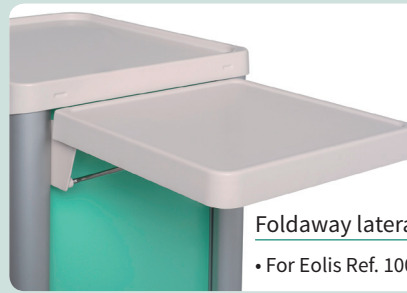
EXTRA ACCESSORIES

eoliz 600x400



Sliding lateral shelf antimicrobial
Ref. **1600.43**

• only for trolley with drawer Ref. 1006.01



Foldaway lateral shelf - Ref. **1500.01**

• For Eolis Ref. 1006.01 and 1006.11



Telescopic front shelf
Ref. **1600.27**

• For Eolis Ref. 1006.01 and cabinets



Telescopic front drawer
lockable - Ref. **1600.28**

• For Eolis Ref. 1006.01 and cabinets



Telescopic front drawer
lockable - Ref. **1600.29**

• For Eolis Ref. 1006.11 and cabinets



Telescopic epoxy steel shelf
600x400 - Ref. **1101.99**

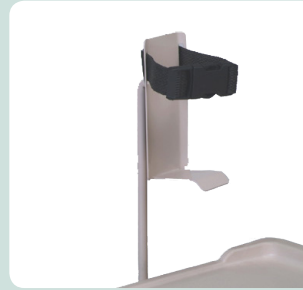
• For Eolis Ref. 1006.11 and cabinets



Guard rail - Ref. **1600.40**



Guard rail with bottle
holder - Ref. **1600.41**



Liquid soap holder
including clamp
Ref. **1101.02**



3 cases bottle holder - Ref. **392.28**



Additional adjustable rail
Ref. **1500.03**

• 330 L x 10 D x 35 H



2 curved hooks adjustable IV pole
Ref. **1500.23**



Universal sharps container holder
Ref. **1101.97**

• without sharp container

EXTRA ACCESSORIES

eoliz 600x400



Gloves box holder in epoxy steel for rail
Ref. **1100.74**



Epoxy steel lateral basket

- 300 L x 100 D x 100 mm ht
Ref. **1101.90**
- 300 L x 160 D x 100 mm ht
Ref. **1101.91**



Side basket in epoxy steel

- 400 L x 200 D x 150 mm ht
Ref. **494.23**
- 400 L x 100 D x 100 mm ht
Ref. **494.21**



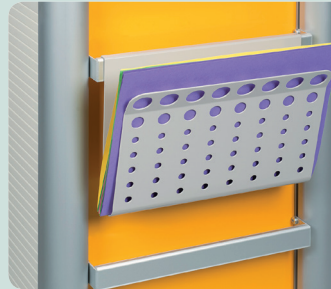
Lateral box in epoxy steel for filing pockets - Ref. **1101.95**

- 328 L x 165 D x 245 mm ht



Lateral letter holder A4 size

- 1 case - Ref. **1500.29**
- 2 cases - Ref. **1500.28**
- 3 cases - Ref. **1500.27**



Sheet holder for rail - Ref. **1101.96**



Single waste bin with removable lid and support

- 10 liters - Ref. **1501.24**
- 15 liters - Ref. **1501.25**

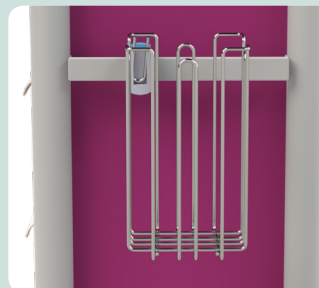


Double waste bins with removable lids and support

- 2 x 10 litres - Ref. **1501.26**
- 2 x 15 litres - Ref. **1501.28**



Refuse bin with lid operated by knee
Ref. **1100.80**



Stainless steel refuse bag holder with clamps for standard rail

- 10 to 20 liters - Ref. **1501.22**
- 20 to 30 liters - Ref. **1501.23**

ANAESTHESIA
TREATMENT

Stickers

- Ref. **1600.44** - Standard sticker: MEDICATION or TREATMENT or ANAESTHESIA
- Ref. **1600.45** - Customized stickers (max. 10 characters)



Additional cost for 4 antistatic wheels with 2 brakes - Ref. **1600.46**

Additional cost for directional wheel
Ref. **1100.77**

EXTRA ACCESSORIES

eoliz 600x400



Boxes holder - Ref. **1600.24**

Bridge - Ref. **1500.11**

Rail for bridge - Ref. **1600.22**

Liquid soap holder - Ref. **1500.21**



Shelf for bridge
Ref. **1600.23**

Line of plastic boxes

- line of 6 boxes
Ref. **1500.16**

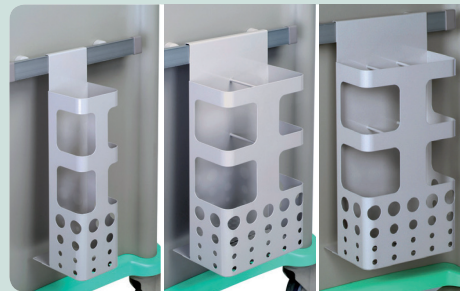
- line of 5 boxes
Ref. **1500.17**

- line of 4 boxes
Ref. **1500.18**



Boxes

- 1 litre - 103 L x 165 D x 83 mm HT - Ref. **890.65**
- 3,5 litres - 145 L x 240 D x 125 mm HT - Ref. **890.66**
- 10 litres - 207 L x 345 D x 165 mm HT - Ref. **890.67**



Catheter holder for rail

- 1 storage - Ref. **1101.94**
- 2 storages - Ref. **1101.92**
- 3 storages - Ref. **1101.93**



Swivel lateral defibrillator
shelf - Ref. **1500.75**



Cardiac board with handles - Ref. **1600.25**

• 600 x 430 mm **CE**



Gaz bottle holder Ø 150 mm max.
Ref. **1100.42**



Holder for suction unit
Ref. **1103.88**



Other plugs available

5 sockets + switch
Ref. **1101.50**



Red seals (qty 100)
Ref. **1100.47**

EXTRA ACCESSORIES

eolis 600x400



Drawers for toxic drugs with lid and lock

- 1 level (63 mm H) - Ref. **1600.33**
- 2 levels (138 mm H) - Ref. **1600.34**
- 3 levels (216 mm H) - Ref. **1600.35**



Files holder with compartments and removable partitions

- For medical files - 18 cases (3 L x 32 D x 36 H) - 5 levels - Ref. **1102.01**



Files holder on telescopic rail
Ref. **1102.14**

- Capacity: 11 cases 40 mm
- 4 levels



- For X-ray files - 18 cases (3 L x 40 D x 48 H) - 7 levels - Ref. **1102.04**



Tube Ø 30 mm for computer holder
Ref. **1500.80**

Vesa holder on short pivot - Ref. **1103.55**



Screen and keyboard antimicrobial holders on short pivot
Ref. **1103.66**

- Height-adjustable and rotating



Arms with universal securized tray for laptop

- Fixed height - Ref. **1103.53**
- Variable height - Ref. **1103.54**



Fixed arm with universal securized tray for laptop
Ref. **1500.81**

- Height-adjustable and rotating



Arms with universal screen holder

- Fixed height - Ref. **1103.56**
- Variable height - Ref. **1103.57**



Lithium universal battery (Life P04) 220 V AC - 250W / h
Ref. **1104.52**



Compact central unit holder - Ref. **1600.26**



Lithium universal battery (Life P04) 220 V AC - 250W / h
Ref. **1504.01**

- Battery integrated in the cart.
- Capacity: 250 W / h for Eolis cart.